

CONTENITORI UNIVERSALI



2024

finiture | finishes | finitions

FINITURE E COLORI DISPONIBILI

FINISHES AND COLOURS AVAILABLE | FINITIONS ET COLORIS DISPONIBLES

Cat. B	CREPE			
	100% Poliestere FR-TREVIRA CS Peso: 330 gr/m² Martindale 100.000 cicli Ignifugo classe 1	100% Polyester FR-TREVIRA CS Weight: 330 gr/m² Martindale 100.000 turns Fire-retardant class 1 (one)	100% Polyester FR-TREVIRA CS Poids: 330 gr/m² Martindale 100.000 cycles Ignifuge classe 1	
				
522 - Grigio perla Light grey Gris clair	525 - Avorio Ivory Ivoire	528 - Verde acido Acid green Vert acide	530 - Artico Arctic Arctique	534 - Giallo Yellow Jaune
				
523 - Grigio scuro Dark grey Gris foncé	526 - Nocciola Hazel Noisette	529 - Petrolio Petroleum Pétrole	531 - Celeste Light blue Bleu clair	535 - Arancio Orange Orange
				
524 - Nero Black Noir	527 - Malto Malt Malt		532 - Cobalto Cobalt Cobalt	536 - Vinaccio Wine red Rouge vin
				
			533 - Blu Blue Bleu	537 - Rosso Red Rouge
				
				538 - Prugna Plum Prune

<div>IT</div> <div>Il codice a tre cifre individua il colore della stoffa applicata nell'articolo / componente. Ogni partita di tessuto può presentare variazioni di tonalità rispetto sia al campionario sia ad elementi prodotti in tempi diversi.</div>	<div>EN</div> <div>The three-digit code identifies the colour of the fabric for each item / component. Each fabric batch can show colour differences compared to the fabric samples and to the products manufactured at different times.</div>	<div>FR</div> <div>Le code à trois chiffres identifie la couleur du tissu appliqué dans l'article / composant. Chaque morceau de tissu peut avoir des variations de ton en ce qui concerne à la fois l'échantillon et les éléments produits à des moments différents.</div>
<div>Leggere differenze di colore tra un lotto di produzione e l'altro, devono essere considerate nella norma. I colori stampati sono indicativi e potrebbero essere sostituiti o modificati nel tempo a discrezione di LAS.</div>	<div>Slight colour differences from lot to lot must be considered within commercial tolerances. Please consider that the colours in these pages are printed, so they can't be considered as real. They can be changed or modified in the life time by LAS.</div>	<div>De légères différences de couleur entre un lot de production et un autre sont absolument normales. Les couleurs imprimées sont approximatives et peuvent être changées ou bien modifiées à jugement de LAS.</div>

Cat. C

TIME



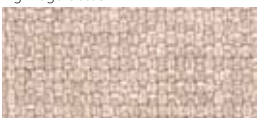
100% Poliestere RICICLATO GRS
Peso: 350 gr/m²
Martindale 100.000 cicli
Ignifugo classe 1

100% Polyester RECYCLED GRS
Weight: 350 gr/m²
Martindale 100.000 turns
Fire-retardant class 1 (one)

100% Polyester RECYCLÉ GRS
Poids: 350 gr/m²
Martindale 100.000 cycles
Ignifuge classe 1



C01 - Grigio
Grey | Gris



C02 - Beige
Beige | Beige



C04 - Verdino
Light green | Vert clair



C06 - Avio
Navy blue | Bleu avio



C09 - Tramonto
Sunset | Coucher



C13 - Antracite
Anthracite | Anthracite



C03 - Tortora
Grey beige | Gris tourterelle



C05 - Verde
Green | Vert



C07 - Oltremare
Ultramarine | Outremer



C10 - Arancio
Orange | Orange



C08 - Petrolio
Petroleum | Pétrole



C11 - Mattone
Brick red | Rouge brique



C12 - Melograno
Pomegranate | Grenade

Cat. C

ONE



100% Poliestere RICICLATO
Peso: 350 gr/m²
Martindale 100.000 cicli
Ignifugo classe 1

100% Polyester RECYCLED
Weight: 350 gr/m²
Martindale 100.000 turns
Fire-retardant class 1 (one)

100% Polyester RECYCLÉ
Poids: 350 gr/m²
Martindale 100.000 cycles
Ignifuge classe 1



C25 - Grigio
Grey | Gris



C28 - Tortora
Grey beige | Gris tourterelle



C29 - Verde acido
Acid green | Vert acide



C32 - Pervinca
Periwinkle | Pervenche



C35 - Ocra
Ocher | Ocre



C26 - Antracite
Anthracite | Anthracite



C30 - Verde
Green | Vert



C33 - Avio
Navy blue | Bleu avio



C36 - Rosso
Red | Rouge



C27 - Nero
Black | Noir



C31 - Petrolio
Petroleum | Pétrole



C34 - Blu
Blue | Bleu



C37 - Bordeaux
Bordeaux | Bordeaux

Cat. D

STRETCH



100% Poliestere FR RICICLATO
Peso: 340 gr/m²
Martindale 50.000 cicli
Ignifugo classe 1

100% Polyester FR RECYCLED
Weight: 340 gr/m²
Martindale 50.000 turns
Fire-retardant class 1 (one)

100% Polyester FR RECYCLÉ
Poids: 340 gr/m²
Martindale 50.000 cycles
Ignifuge classe 1



586 - Grigio
Grey | Gris



589 - Tortora
Grey beige | Gris tourterelle



591 - Verde acido
Acid green | Vert acide



593 - Azzuro sky
Sky blue | Bleu sky



595 - Giallo fnesia
Freesia yellow | Jaune freesia



587 - Antracite
Anthracite | Anthracite



592 - Verde bosco
Wood green | Vert forêt



594 - Blu
Blue | Bleu



597 - Rosso
Red | Rouge



588 - Nero
Black | Noir

Cat. D

MELANGE



100% Poliestere FR RICICLATO
Peso: 340 gr/m²
Martindale 50.000 cicli
Ignifugo classe 1

100% Polyester FR RECYCLED
Weight: 340 gr/m²
Martindale 50.000 turns
Fire-retardant class 1 (one)

100% Polyester FR RECYCLÉ
Poids: 340 gr/m²
Martindale 50.000 cycles
Ignifuge classe 1



603 - Cenere
Ash | Cendre



607 - Nocciola
Hazel | Noisette



601 - Salvia
Sage green | Vert Saugé



612 - Azzurro
Azure | Azur



614 - Petunia
Petunia | Pétunia



604 - Grigio
Grey | Gris



608 - Verde acido
Acid green | Vert acide



602 - Blu
Blue | Bleu



605 - Fumo
Smoke | Fumée



609 - Muschio
Moss green | Vert mousse



600 - Antracite
Anthracite | Anthracite



610 - Verdone
Dark green | Vert foncé

Cat. D

TREVI



100% Poliestere FR - TREVIRA CS
Peso: 450 gr/m²
Martindale 70.000 cicli
Ignifugo classe 1

100% Polyester FR - TREVIRA CS
Weight: 450 gr/m²
Martindale 70.000 turns
Fire-retardant class 1 (one)

100% Polyester FR - TREVIRA CS
Poids: 450 gr/m²
Martindale 70.000 cycles
Ignifuge classe 1



624 - Nero
Black | Noir



617 - Avorio
Ivory | Ivoire



618 - Salvia
Sage green | Vert Sauge



619 - Cesio
Cesium | Césium



620 - Pesca
Peach | Pêche



625 - Tortora
Grey beige | Gris tourterelle



632 - Blu
Blue | Bleu



634 - Mattone
Brick red | Rouge brique



636 - Rosso
Red | Rouge



638 - Bordeaux
Bordeaux | Bordeaux

Cat. E

LANA



75% Lana - 25% Poliammide
Peso: 335 gr/m²
Martindale 100.000 cicli

75% Wool - 25% Polyamide
Weight: 335 gr/m²
Martindale 100.000 turns

75% Laine - 25% Polyamide
Poids: 335 gr/m²
Martindale 100.000 cycles



642 - Grigio chiaro
Light grey | Gris clair



645 - Tortora
Grey beige | Gris tourterelle



647 - Verde acido
Acid green | Vert acide



649 - Artico
Arctic | Arctique



643 - Grigio scuro
Dark grey | Gris foncé



648 - Muschio
Moss green | Vert mousse



650 - Malibú
Malibu | Malibu



652 - Avio
Navy blue | Bleu avio



652 - Avio
Navy blue | Bleu avio

Cat. E

NAUTILUS



100% Poliestere riciclato - certificato
SEAQUAL
Peso: 410 gr/m²
Martindale 100.000 cicli

100% Recycled Polyester - SEAQUAL
Certified
Weight: 410 gr/m²
Martindale 100.000 turns

100% Recycled Polyester - SEAQUAL
Certified
Poids: 410 gr/m²
Martindale 100.000 cycles



E01 - Pietra
Stone | Pierre



E02 - Grigio
Grey | Gris



E03 - Nero
Black | Noir



E04 - Acqua
Water | Eau



E05 - Verde
Green | Vert



E06 - Prato
Lawn | Pelouse



E07 - Verdone
Dark green | Vert foncé



E08 - Ceruleo
Cerulean | Céruléen



E09 - Azzurro
Azure | Azur



E10 - Pervinca
Periwinkle | Pervenche



E11 - Blu
Blue | Bleu



E12 - Melograno
Pomegranate | Grenade



E13 - Bordeaux
Bordeaux | Bordeaux

Cat. F



SEALIFE

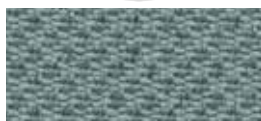
NEW



100% Poliestere riciclato - certificato
SEAQUAL
Peso: 330 gr/m²
Martindale 100.000 cicli
Ignifugo classe 1

100% Recycled Polyester - SEAQUAL
Certified
Weight: 330 gr/m²
Martindale 100.000 turns
Fire-retardant class 1 (one)

100% Recycled Polyester - SEAQUAL
Certified
Poids: 330 gr/m²
Martindale 100.000 cycles
Ignifuge classe 1



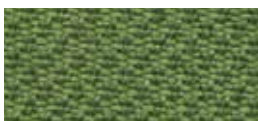
F01 - Grigio
Grey | Gris



F02 - Nero
Black | Noir



F03 - Fango
Mud | Boue



F04 - Muschio
Moss green | Vert mousse



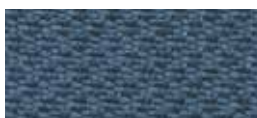
F05 - Verde
Green | Vert



F06 - Acqua
Water | Eau



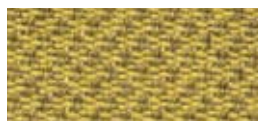
F07 - Celeste
Light blue | Bleu clair



F08 - Azzurro
Azure | Azur



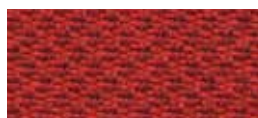
F09 - Blu
Blue | Bleu



F10 - Odra
Ocher | Ocre



F11 - Mattone
Brick red | Rouge brique



F12 - Melograno
Pomegranate | Grenade

Cat. G

MIXAGE



100% Trevira CS
Peso: 400 gr/m²
Martindale 70.000 cicli
Ignifugo classe 1

100% Trevira CS
Weight: 400 gr/m²
Martindale 70.000 turns
Fire-retardant class 1 (one)

100% Trevira CS
Poids: 400 gr/m²
Martindale 70.000 cycles
Ignifuge classe 1



G15 - Grigio
Grey | Gris



G17 - Beige
Beige | Beige



G19 - Muschio
Moss green | Vert mousse



G21 - Oltremare
Ultramarine | Outremer



G26 - Giallo
Yellow | Jaune



G16 - Nero
Black | Noir



G18 - Tortora
Grey beige | Gris tourterelle



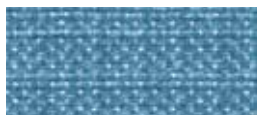
G20 - Verde
Green | Vert



G22 - Celeste
Light blue | Bleu clair



G27 - Ambra
Amber | Ambre



G23 - Cielo
Sky | Ciel



G24 - Avio
Navy blue | Bleu avio



G25 - Blu
Blue | Bleu

Cat. G

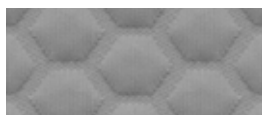
SPAZIO



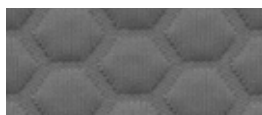
100% Poliestere RICICLATO
Peso: 635 gr/m²
Martindale 50.000 cicli
Ignifugo classe 1

100% Polyester RECYCLED
Weight: 635 gr/m²
Martindale 50.000 turns
Fire-retardant class 1 (one)

100% Polyester RECYCLÉ
Poids: 635 gr/m²
Martindale 50.000 cycles
Ignifuge classe 1



G35 - Grigio
Grey | Gris



G36 - Antracite
Anthracite | Anthracite



G37 - Nero
Black | Noir



G38 - Verde acido
Acid green | Vert acide



G39 - Verde
Green | Vert



G40 - Petrolio
Petroleum | Pétrole



G41 - Pervinca
Periwinkle | Pervenche



G42 - Blu
Blue | Bleu



G43 - Ocra
Ocher | Ocre



G44 - Bordeaux
Bordeaux | Bordeaux

Cat. G



POSEIDON

NEW



100% Poliestere riciclato - certificato
SEAQUAL
Peso: 500 gr/m²
Martindale 100.000 cicli
Ignifugo classe 1

100% Recycled Polyester - SEAQUAL
Certified
Weight: 500 gr/m²
Martindale 100.000 turns
Fire-retardant class 1 (one)

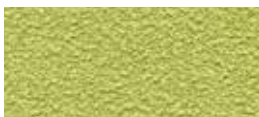
100% Recycled Polyester - SEAQUAL
Certified
Poids: 500 gr/m²
Martindale 100.000 cycles
Ignifuge classe 1



G51 - Antracite
Anthracite | Anthracite



G53 - Avorio
Ivory | Ivoire



G55 - Verde
Green | Vert



G56 - Azzurro
Azure | Azur



G58 - Giallo
Yellow | Jaune



G52 - Nero
Black | Noir



G54 - Nocciola
Hazel | Noisette



G57 - Blu
Blue | Bleu

Cat. G

SUPREME

NEW



50% PL-Poliestere / 35% AC-Acetato
15% PA-Poliamidica
Peso: 410 gr/m²
Martindale 200.000 cicli
Ignifugo classe 1

50% PL-Polyester / 35% AC-Acetate
15% PA-Nylon
Weight: 410 gr/m²
Martindale 200.000 turns
Fire-retardant class 1 (one)

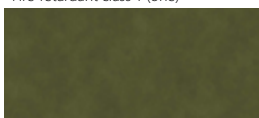
50% PL-Polyester / 35% AC-Acetate
15% PA-Polyamide
Poids: 410 gr/m²
Martindale 200.000 cycles
Ignifuge classe 1



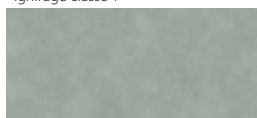
G65 - Grigio
Grey | Gris



G68 - Beige
Beige | Beige



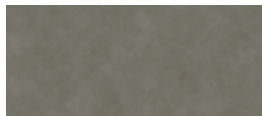
G70 - Muschio
Moss green | Vert mousse



G71 - Piombo
Lead | Plomb



G73 - Odra
Ocher | Ocre



G66 - Antracite
Anthracite | Anthracite



G69 - Tortora
Grey beige | Gris tourterelle



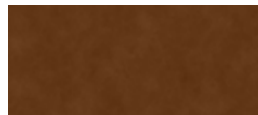
G72 - Avio
Navy blue | Bleu avio



G74 - Avana
Havana | Havane



G67 - Nero
Black | Noir



G75 - Ruggine
Russet | Rouille



G76 - Rosso
Red | Rouge

GRAIN by Gabriel

92% Poliestere riciclato post consumo
- 8% Poliestere

80% Poliestere riciclato post consumo - 20% Poliestere
Peso: 439 gr/m²
Martindale 100.000 cicli

92% Post-consumer recycled polyester
- 8% Polyester

80% Post-consumer recycled polyester - 20% Polyester
Weight: 439 gr/m²
Martindale 100.000 turns

92% Polyester recyclé post-consommation - 8% Polyester

80% Polyester recyclé post-consommation - 20% Polyester
Poids: 439 gr/m²
Martindale 100.000 cycles



I01 - Avio
Navy blue | Bleu avio



I05 - Oro
Gold | Or



I02 - Jeans
Jeans | Jeans



I06 - Ocra
Ocher | Ocre



I03 - Cesio
Cesium | Césium



I07 - Nudo
Nude | Nude



I04 - Sera
Evening | Soir



I08 - Cipria
Powder pink | Rose poudre



I09 - Mattone
Brick red | Rouge brique



I10 - Arancio
Orange | Orange



I11 - Ambra
Amber | Ambre