

JERA ENOSI E.O.S. IULIO
ELITE DELTA FIL ROUGE
5th ELEMENT OXI UP
SCHERMI PIEGO CHIUDO
SEGUO SHARE CUBO
PRONTO CONTENITORI
UNIVERSALI I-MEET
NICE POINT JAVA PAUSA
CONVIVIO FUNGO SEGNO
ICARO REGOLO KYOTO
PODIO

LAS

2024

finiture | finishes | finitions

CARTE COULEURS

CARTA DE COLORES

BOIS | MADERA

○ = MELAMINE | MELAMINA



COD. 03
CHÊNE | ROBLE
 Fil Rouge - 5th Element - Oxi - Up - Écrans Universels
 - Tables multifonctions - Meubles Universels - Delta -
 Point - Tables Break & Café - Share - Cubo - Pronto



COD. 07
NOYER CLASSIQUE | NOGAL CLÁSICO
 5th Element - Oxi - Up - Écrans Universels - Tables
 multifonctions - Meubles Universels - Delta - Point -
 Tables Break & Café - Cubo - Pronto



COD. 09
CHÊNE NATUREL | ROBLE NATURAL
 5th Element - Oxi - Up - Écrans Universels - Tables
 multifonctions - Meubles Universels - E.O.S. Point -
 Tables Break & Café - Cubo - Pronto



COD. 13
NOYER MODERNE | NOGAL MODERNO
 Fil Rouge - 5th Element - Oxi - Up - Écrans Universels
 - Tables multifonctions - Meubles Universels - E.O.S.
 - Point - Tables Break & Café - Cubo - Pronto



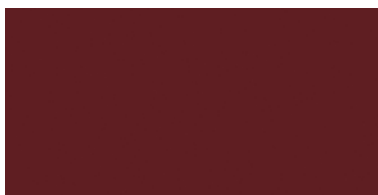
COD. 20
VERT MOUSSE | VERDE MUSGO
 Fil Rouge - Oxi - Écrans Universels - Meubles
 Universels - Point - Tables Break & Café - Cubo -
 Pronto



COD. 31
CHÊNE NIAGARA | ROBLE NIAGARA
 Fil Rouge - 5th Element - Oxi - Up - Écrans Universels
 - Tables multifonctions - Meubles Universels - Point -
 Tables Break & Café - Share - Cubo - Pronto



COD. 38
GRIS | GRIS
 5th Element - Oxi - Up - Écrans Universels - Tables
 multifonctions - Meubles Universels - Point - Tables
 Break & Café - Share - Cubo - Pronto



COD. 39
ROUGE GRENADE | ROJO GRANATE
 5th Element - Oxi - Écrans Universels - Meubles
 Universels - Point - Tables Break & Café - Share -
 Cubo - Pronto



COD. 40
VERT SAUGE | VERDE SALVIA
 Fil Rouge - Oxi - Écrans Universels - Meubles
 Universels - Point - Tables Break & Café - Share -
 Cubo - Pronto



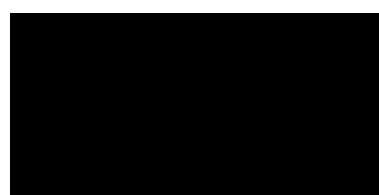
COD. 41
BLEU BRUMEUX | AZUL BRUMOSO
 Oxi - Écrans Universels - Meubles Universels - Point
 - Tables Break & Café - Share - Cubo - Pronto



COD. 44
STONE GREY | STONE GREY
 Fil Rouge - 5th Element - Oxi - Up - Écrans Universels
 - Tables multifonctions - Meubles Universels - Jera -
 Delta - Nice - Point - Tables Break & Café - Share
 - Cubo - Pronto - Monolith



COD. 46
ROSE ANTIQUE | ROSA ANTIGUO
 Oxi - Écrans Universels - Meubles Universels - Point
 - Tables Break & Café - Share - Cubo - Pronto



COD. 59
NOIR | NEGRO
 Fil Rouge - 5th Element - Oxi - Up - Écrans Universels
 - Tables multifonctions - Meubles Universels E.O.S.
 - Elite - Point - Tables Break & Café - Share - Cubo
 - Pronto - Monolith



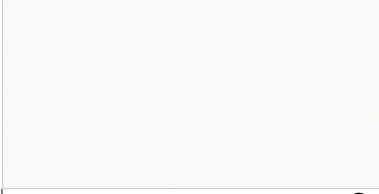
COD. 63
PEUPLIER BRUN | ÁLAMO PARDO
 Fil Rouge - 5th Element - Oxi - Up - Écrans Universels
 - Tables multifonctions - Meubles Universels - Elite -
 Delta - Point - Tables Break & Café - Cubo - Pronto



COD. 64
PEUPLIER CLAIR | ÁLAMO CLARO
 Fil Rouge - 5th Element - Oxi - Up - Écrans Universels
 - Tables multifonctions - Meubles Universels - E.O.S.
 - Elite - Point - Tables Break & Café - Cubo - Pronto

● Les couleurs des bois, verres et métaux photographiés sont indicatives
 ● Los colores de las maderas, vidrios y metales fotografiados son indicativos

○ = MELAMINE | MELAMINA



COD. 68

BLANC | BLANCO

Fil Rouge - 5th Element - Oxi - Up - Écrans Universels
- Tables multifonctions - Meubles Universels - Delta -
Point - Tables Break & Café - Share - Cubo - Pronto



COD. 73

BRONZE | BRONCE

Elite

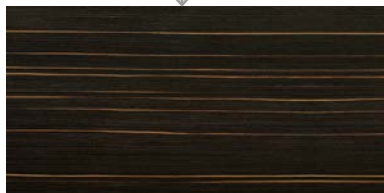
CARTE COULEURS

CARTA DE COLORES

BOIS | MADERA

▲ = ESSENCES DE BOIS | ESENCIAS DE MADERA

△ = 3D-FOIL



COD. 25
EBENE CLASSIQUE | EBANO CLASICO ▲
Elite



COD. 26
ORME MODERNE | OLMO MODERNO ▲
Elite



COD. 27
NOYER CANALETTO | NOGAL CANALETTO ▲
Elite



COD. 12
ORME GREY | OLMO GREY △
Monolith - Jera - Iulio - I Meet - Nice - Tables Break & Café



COD. 30
NOYER BALI | NOGAL BALI △
Monolith - Jera - Iulio - I Meet - Nice - Tables Break & Café



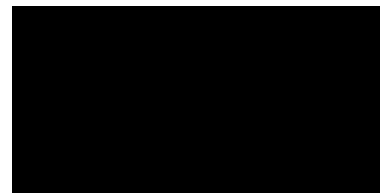
COD. 37
NOYER PACIFIC | NOGAL PACIFIC △
Enosi - Tables Break & Café



COD. 52
FRÊNE BROWN | FRESNO BROWN △
Jera - Iulio - I Meet - Nice - Tables Break & Café



COD. 55
ARDOISE | PIZARRA △
Monolith



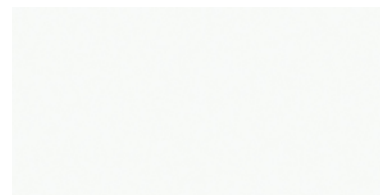
COD. 56
NOIR | NEGRO △
Monolith - Jera - Enosi - Iulio - I Meet - Nice - Tables Break & Café



COD. 60
WENGÉ | WENGE △
Monolith - Jera - I Meet - - Tables Break & Café



COD. 67
TEAK SAMOA | TEAK SAMOA △
Iulio - I Meet - Nice - Tables Break & Café



COD. 68
BLANC | BLANCO △
Enosi - Iulio - I Meet - Nice - Tables Break & Café



COD. 83
GRIS TOURTERELLE | TORTOLA △
Monolith - Jera - I Meet - Tables Break & Café

VERRES | VIDRIOS □



COD. 10
NOIR | NEGRO
5th Element - Enosi - E.O.S. - Elite - I Meet - Nice -
Tables Break & Café



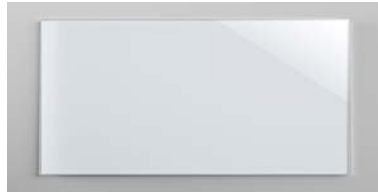
COD. 77
FUMÉ TRANSPARENT
HUMO TRANSPARENTE
E.O.S.



COD. 99
BLANC SATINÉ | BLANCO SATINADO
Meubles Universels - Delta - Nice



COD. 71
GRIS LONDRES | GRIS LONDRES
Elite



COD. 78
BLANC EXTRA | BLANCO EXTRA
Enosi - Nice



COD. 81
NOIR MARBRE | NEGRO MARMOLADO
Tables Break & Café



COD. 72
GRIS TOURTERELLE | TORTOLA
5th Element - Tables Break & Café



COD. 79
BLANC | BLANCO
5th Element - Tables Break & Café



COD. 82
BLANC MARBRE | BLANCO MARMOLADO
Tables Break & Café

CERAMIQUE EFFET MARBRE | CERÁMICA EFECTO MÁRMOL



COD. CR40
CALACATTA BLANC | CALACATTA BLANCO
Monolith



COD. CR50
NOIR DESIRÉ | NEGRO DESIRÉ
Monolith

MÉTAUX | METALES



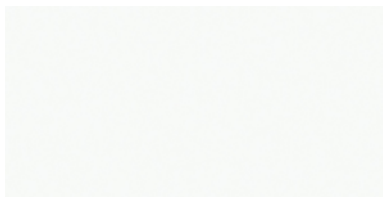
COD. AR 02
ARGENT | PLATA
 5th Element - Oxi - Meubles Universels - Point -
 Tables Break & Café - OYO Accessoires



COD. SG 01
STONE GREY | STONE GREY
 Fil Rouge - 5th Element - Oxi - Écrans universels -
 Meubles Universels - Delta - Point - Tables Break &
 Café - OYO Accessoires - Share - Cubo



COD. OR 02 (RAL 2001)
ORANGE | NARANJA
 Tables Break & Café



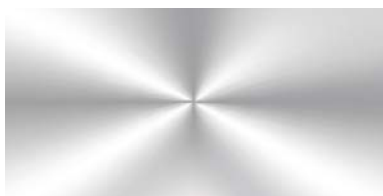
COD. BI 02 (RAL 9016)
BLANC | BLANCO
 Fil Rouge - 5th Element - Oxi - Meubles Universels
 - Enosi - Delta - Point - Tables Break & Café - OYO
 Accessoires - Share - Cubo



COD. CP 01
ROSE POUUDRE | ROSA POLVO
 Oxi - Écrans universels - Meubles Universels - Point
 - Tables Break & Café - OYO Accessoires - Share
 - Cubo



COD. VR 01
VERT MOUSSE | MOSS GREEN
 Fil Rouge - Oxi - Écrans universels - Meubles
 Universels - Point - Tables Break & Café - OYO
 Accessoires - Cubo



COD. CR 01
CHROMEÉE | CROMADO
 5th Element - Enosi - I Meet - Tables multifonctions
 - Tables Break & Café



COD. VR 02
VERT | VERDE
 Fil Rouge - Oxi - Écrans universels - Meubles
 Universels - Point - Tables Break & Café - OYO
 Accessoires - Share - Cubo



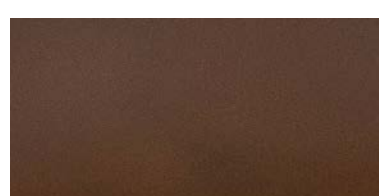
COD. RS 02 (RAL 3005)
ROUGE GRENADE | ROJO GRANATE
 Oxi - Écrans universels - Meubles Universels - Point
 - Tables Break & Café - OYO Accessoires - Share
 - Cubo



COD. IG 01
INOX GREY | INOX GREY
 Iulio - Tables Break & Café



COD. AV 02
BLEU AVIO | AZUL AVIO
 Oxi - Écrans universels - Meubles Universels - Point
 - Tables Break & Café - OYO Accessoires - Share
 - Cubo



COD. RG04
ROUILLE | ORIN
 Monolith



COD. NR 03
NOIR (MAT) | NEGRO (MATE)
 Fil Rouge - 5th Element - Oxi - Écrans universels -
 Meubles Universels - Enosi - Delta - Point - Tables
 Break & Café - OYO Accessoires - Share - Cubo



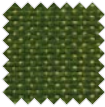





COD. GL 02 (RAL 1005)
MOUTARDE | MOSTAZA
 Tables Break & Café




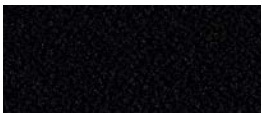





COD. TR05
TERRE CUITE | TERRACOTA
 Monolith

ÉLÉMENTS REVÊTEMENT TISSUS PRÉSENT DANS LES DIVERS MODÈLES BY LAS MOBILI
ELEMENTOS TAPIZADOS EN TELA PRESENTES EN LOS MODELOS BY LAS MOBILI

| Category | B | B | C | C | D | D | D | E | E | F | G | G | G | G | I | I | |
|---|-----------|-------|------|-----|---------|---------|-------|------|----------|---------|--------|--------|----------|---------|------------------|----------------|------------------|
| | Eco-pelle | Crepe | Time | One | Stretch | Melange | Trevi | Lana | Nautilus | Sealife | Mixage | Spazio | Poseidon | Supreme | Grain by Gabriel | Ally by Flukso | Feutre Feltro |
| JERA (Direction-Direccional) | | | | | | | | | | | | | | | | | |
| CÔTÉ ET VOILE DE FOND BUREAUX PAD - PANNEAU VERTICAL PARA: LATERAL Y FALDON - ALMOHADILLA PANEL VERTICAL | • | | | | | | | | | | | | | | | | |
| MONOLITH (Direction-Direccional) | | | | | | | | | | | | | | | | | |
| INSERT SUR PLATEAUX INSERTO SOBRES | • | | | | | | | | | | | | | | | | |
| FIL ROUGE | | | | | | | | | | | | | | | | | |
| COUSSINS ALMOHADAS | • | • | • | • | • | • | • | • | • | • | • | • | • | • | • | • | • |
| ECRANS POUR BUREAUX PANELES PARA MESAS | • | • | • | • | • | • | • | • | • | • | • | • | • | • | • | • | • |
| 5th ELEMENT | | | | | | | | | | | | | | | | | |
| COUSSINS ALMOHADAS | • | • | • | • | • | • | • | • | • | • | • | • | • | • | • | • | • |
| OXI | | | | | | | | | | | | | | | | | |
| ACCESSOIRES ACCESORIOS | | | | | • | • | | • | | | | | | | | | |
| KIT REVETEMENTS ACOUSTIQUES KIT REVESTIMIENTOS ACUSTICOS | | | | | • | | | | | | | | | | | | |
| UP | | | | | | | | | | | | | | | | | |
| ECRANS POUR BENCH PANELES PARA BENCH | • | • | • | • | • | • | • | • | • | • | • | • | • | • | • | • | • |
| ÉCRANS UNIVERSELS PANELES UNIVERSALES | | | | | | | | | | | | | | | | | |
| ÉCRANS TYPE (S2) PANELES TIPO (S2) | • | • | • | • | • | • | • | • | • | • | • | • | • | • | • | • | • |
| ÉCRANS TYPE (S3) PANELES TIPO (S3) | • | • | • | • | • | • | • | • | • | • | • | • | • | • | • | • | • |
| ÉCRANS TYPE (S4) PANELES TIPO (S4) | | | | | • | • | | | | | | | | | | | |
| ÉCRANS FEUTRE (S5) PANELES FIELTRO (S5) | | | | | | | | | | | | | | | | | • |
| ACCESSOIRES ACCESORIOS | | | | | • | • | | • | | | | | | | | | |
| KIT REVETEMENTS ACOUSTIQUES (S1) KIT REVESTIMIENTOS ACUSTICOS (S1) | | | | | • | | | | | | | | | | | | |
| SYSTÈMES COLLABORATEURS SISTEMAS COLABORATIVOS | | | | | | | | | | | | | | | | | |
| SHARE | • | • | • | • | • | • | • | • | • | • | • | • | • | • | • | • | • |
| PRONTO | | | | | • | | | | | | | | | | | | |
| MEUBLES UNIVERSELS MUEBLES UNIVERSALES | | | | | | | | | | | | | | | | | |
| COUSSINS ALMOHADAS | • | • | • | • | • | • | • | • | • | • | • | • | • | • | • | • | • |

| CATEGORY | CODE | (*) | COLORE | COLOUR |
|---|-------|------------|-------------|----------------------------|
| CAT. G | | | | |
| MIXAGE | --- | --- | G15 | GRIS GRIS |
|  | --- | --- | G16 | NOIR NEGRO |
| | --- | --- | G17 | BEIGE BEIGE |
| | --- | --- | G18 | GRIS TOURTERELLE TORTOLA |
| | --- | --- | G19 | VERT MOUSSE VERDE MUSGO |
| | --- | --- | G20 | VERT VERDE |
| | --- | --- | G21 | OUTREMER ULTRAMARINO |
| | --- | --- | G22 | BLEU CLAIR CELESTE |
| | --- | --- | G23 | CIEL CIELO |
| | --- | --- | G24 | BLEU AVIO AZUL AVIO |
| | --- | --- | G25 | BLEU AZUL OSCURO |
| | --- | --- | G26 | JAUNE AMARILLO |
| --- | --- | G27 | AMBRE ÁMBAR | |
| <hr/> | | | | |
| SPAZIO | --- | --- | G35 | GRIS GRIS |
|  | --- | --- | G36 | ANTHRACITE ANTRACITA |
| | --- | --- | G37 | NOIR NEGRO |
| | --- | --- | G38 | VERT ACIDE VERDE ÁCIDO |
| | --- | --- | G39 | VERT VERDE |
| | --- | --- | G40 | PÉTROLE PETROLIO |
| | --- | --- | G41 | PERVENCHE PERVINCA |
| | --- | --- | G42 | BLEU AZUL OSCURO |
| | --- | --- | G43 | OCRE OCRE |
| | --- | --- | G44 | BORDEAUX BURDEOS |
| | <hr/> | | | |
| POSEIDON | --- | --- | G51 | ANTHRACITE ANTRACITA |
|  | --- | --- | G52 | NOIR NEGRO |
| | --- | --- | G53 | IVOIRE MARFIL |
| | --- | --- | G54 | NOISETTE AVELLANA |
| | --- | --- | G55 | VERT VERDE |
| | --- | --- | G56 | AZUR AZUL |
| | --- | --- | G57 | BLEU AZUL OSCURO |
| | --- | --- | G58 | JAUNE AMARILLO |
| | <hr/> | | | |
| SUPREME | --- | --- | G65 | GRIS GRIS |
|  | --- | --- | G66 | ANTHRACITE ANTRACITA |
| | --- | --- | G67 | NOIR NEGRO |
| | --- | --- | G68 | BEIGE BEIGE |
| | --- | --- | G69 | GRIS TOURTERELLE TORTOLA |
| | --- | --- | G70 | VERT MOUSSE VERDE MUSGO |
| | --- | --- | G71 | PLOMB PLOMO |
| | --- | --- | G72 | BLEU AVIO AZUL AVIO |
| | --- | --- | G73 | OCRE OCRE |
| | --- | --- | G74 | HAVANE HABANA |
| | --- | --- | G75 | ROUILLE ORIN |
| | --- | --- | G76 | ROUGE ROJO |
| <hr/> | | | | |
| CAT. I | | | | |
| GRAIN BY GABRIEL | --- | --- | I01 | BLEU AVIO AZUL AVIO |
|  | --- | --- | I02 | JEANS JEANS |
| | --- | --- | I03 | CESIUM CESIO |
| | --- | --- | I04 | SOIR NOCHE |
| | --- | --- | I05 | OR ORO |
| | --- | --- | I06 | OCRE OCRE |
| | --- | --- | I07 | NUDE NUDE |
| | --- | --- | I08 | ROSE POUFRE ROSA POLVO |
| | --- | --- | I09 | ROUGE BRIQUE ROJO LADRILLO |
| | --- | --- | I10 | ORANGE NARANJA |
| | --- | --- | I11 | AMBRE ÁMBAR |
| | <hr/> | | | |
| ALLY BY FLUKSO | --- | --- | I45 | GRIS GRIS |
|  | --- | --- | I46 | ANTHRACITE ANTRACITA |
| | --- | --- | I47 | IVOIRE MARFIL |
| | --- | --- | I48 | GRIS TOURTERELLE TORTOLA |
| | --- | --- | I49 | VERT MOUSSE VERDE MUSGO |
| | --- | --- | I50 | PÉTROLE PETROLIO |
| | --- | --- | I51 | BLEU AVIO AZUL AVIO |
| | --- | --- | I52 | OCRE OCRE |
| | --- | --- | I53 | ORANGE NARANJA |
| | --- | --- | I54 | GRENADE GRANADA |

| Cat. B | CREPE | |  | | | | |
|---|--|--|---|--|--|---|---|
| | 100% Polyester FR-TREVIRA CS Poids: 330 gr/m ² Martindale 100.000 cycles Ignifuge classe 1 | 100% Poliéster FR-TREVIRA CS Peso: 330 gr/m ² Martindale 100.000 ciclos Ignifugo clase 1 |  |  |  |  |  |
| 522 - GRIS CLAIR GRIS PERLA | 525 - IVOIRE MARFIL | 528 - VERT ACIDE VERDE ÁCIDO | 530 - ARCTIQUE ARTICO | 534 - JAUNE AMARILLO | | | |
|  |  |  |  |  | | | |
| 523 - GRIS FONCÉ GRIS OSCURO | 526 - NOISETTE AVELLANA | 529 - PÉTROLE PETROLIO | 531 - BLEU CLAIR CELESTE | 535 - ORANGE NARANJA | | | |
|  |  | |  |  | | | |
| 524 - NOIR NEGRO | 527 - MALT MALTO | | 532 - COBALT COBALTO | 536 - ROUGE VIN VINACCIO | | | |
| | | |  |  | | | |
| | | | 533 - BLEU AZUL OSCURO | 537 - ROUGE ROJO | | | |
| | | | |  | | | |
| | | | | 538 - PRUNE MORADO | | | |

FR

Le code à trois chiffres identifie la couleur du tissu appliqué dans l'article / composant. Chaque morceau de tissu peut avoir des variations de ton en ce qui concerne à la fois l'échantillon et les éléments produits à des moments différents.

De légères différences de couleur entre un lot de production et un autre sont absolument normales. Les couleurs imprimées sont approximatives et peuvent être changées ou bien modifiées à jugement de LAS.

ES

El código de tres dígitos identifica el color del tejido aplicado en el artículo / componente. Cada pieza de tela puede tener variaciones en el tono con respecto a la muestra y los elementos producidos en diferentes momentos.

La diferencia de color entre un lote de producción y otro debe considerarse en el estándar. Los colores impresos son indicativos y pueden ser reemplazados o modificados a lo largo del tiempo a discreción de LAS.

Cat. C

TIME



100% Polyester RECYCLÉ GRS
Poids: 350 gr/m²
Martindale 100.000 cycles
Ignifuge classe 1

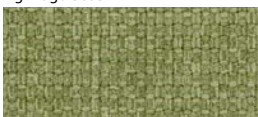
100% Poliéster RECICLADO GRS
Peso: 350 gr/m²
Martindale 100.000 ciclos
Ignifugo clase 1



C01 - GRIS
GRIS



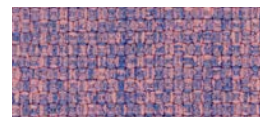
C02 - BEIGE
BEIGE



C04 - VERT CLAIR
VERDE CLARO



C06 - BLEU AVIO
AZUL AVIO



C09 - COUCHER
ATARDECER



C13 - ANTHRACITE
ANTRACITA



C03 - GRIS TOURTERELLE
TORTOLA



C05 - VERT
VERDE



C07 - OUTREMER
ULTRAMARINO



C10 - ORANGE
NARANJA



C08 - PÉTROLE
PETROLIO



C11 - ROUGE BRIQUE
ROJO LADRILLO



C12 - GRENADE
GRANADA

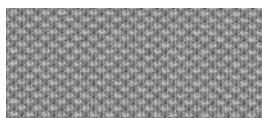
Cat. C

ONE



100% Polyester RECYCLÉ
Poids: 350 gr/m²
Martindale 100.000 cycles
Ignifuge classe 1

100% Poliéster RECICLADO
Peso: 350 gr/m²
Martindale 100.000 ciclos
Ignifugo clase 1



C25 - GRIS
GRIS



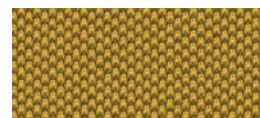
C28 - GRIS TOURTERELLE
TORTOLA



C29 - VERT ACIDE
VERDE ÁCIDO



C32 - PERVENCHE
PERMINCA



C35 - OCRE
OCRE



C26 - ANTHRACITE
ANTRACITA



C30 - VERT
VERDE



C33 - BLEU AVIO
AZUL AVIO



C36 - ROUGE
ROJO



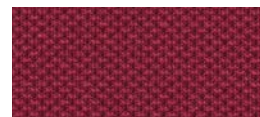
C27 - NOIR
NEGRO



C31 - PÉTROLE
PETROLIO



C34 - BLEU
AZUL OSCURO



C37 - BORDEAUX
BURDEOS

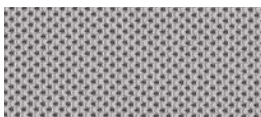
Cat. D

STRETCH



100% Polyester FR RECYCLÉ
Poids: 340 gr/m²
Martindale 50.000 cycles
Ignifuge classe 1

100% Poliéster FR RECICLADO
Peso: 340 gr/m²
Martindale 50.000 ciclos
Ignífugo clase 1



586 - GRIS
GRIS



589 - GRIS TOURTERELLE
TORTOLA



591 - VERT ACIDE
VERDE ÁCIDO



593 - BLEU SKY
AZUL SKY



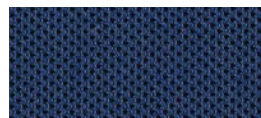
595 - JAUNE FREESIA
AMARILLO FREESIA



587 - ANTHRACITE
ANTRACITA



592 - VERT FORÊT
VERDE BOSQUE



594 - BLEU
AZUL OSCURO



597 - ROUGE
ROJO



588 - NOIR
NEGRO

Cat. D

MELANGE



100% Polyester FR RECYCLÉ
Poids: 340 gr/m²
Martindale 50.000 cycles
Ignifuge classe 1

100% Poliéster FR RECICLADO
Peso: 340 gr/m²
Martindale 50.000 ciclos
Ignífugo clase 1



603 - CENDRE
GRIS CENIZA



607 - NOISETTE
AVELLANA



601 - SAUGE
SALVIA



612 - AZUR
AZUL



614 - PETUNIA
PETUNIA



604 - GRIS
GRIS



608 - VERT ACIDE
VERDE ÁCIDO



602 - BLEU
AZUL OSCURO



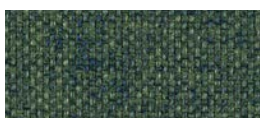
605 - FUMÉE
HUMO



609 - VERT MOUSSE
VERDE MUSGO



600 - ANTHRACITE
ANTRACITA



610 - VERT FONCÉ
VERDE OSCURO

Cat. D

TREVI

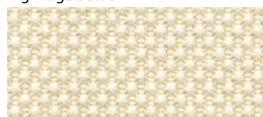


100% Polyester FR - TREVIRA CS
Poids: 450 gr/m²
Martindale 70.000 cycles
Ignifuge classe 1

100% Poliéster FR - TREVIRA CS
Peso: 450 gr/m²
Martindale 70.000 ciclos
Ignifugo clase 1



624 - NOIR
NEGRO



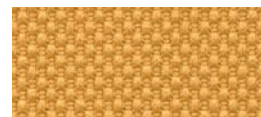
617 - IVOIRE
MARFIL



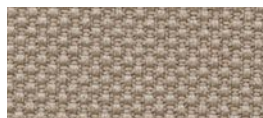
618 - SAUGE
SALVA



619 - CESIUM
CESIO



620 - PÊCHE
PESCA



625 - GRIS TOURTERELLE
TORTOLA



632 - BLEU
AZUL OSCURO



634 - ROUGE BRIQUE
ROJO LADRILLO



636 - ROUGE
ROJO



638 - BORDEAUX
BURDEOS

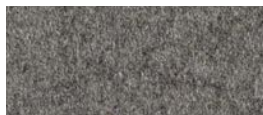
Cat. E

LANA



75% Laine - 25% Polyamide
Poids: 335 gr/m²
Martindale 100.000 cycles

75% Lana - 25% Poliamida
Peso: 335 gr/m²
Martindale 100.000 ciclos



642 - GRIS CLAIR
GRIS CLARO



645 - GRIS TOURTERELLE
TORTOLA



647 - VERT ACIDE
VERDE ÁCIDO



649 - ARCTIQUE
ARTICO



643 - GRIS FONCÉ
GRIS OSCURO



648 - VERT MOUSSE
VERDE MUSGO



650 - MALIBU
MALIBU



652 - BLEU AVIATEUR
AZUL AVIO

Cat. E

NAUTILUS

100% Recycled Polyester - SEAQUAL
Certified
Poids: 410 gr/m²
Martindale 100.000 cycles

100% Poliéster Reciclado - Certificado
SEAQUAL
Peso: 410 gr/m²
Martindale 100.000 ciclos



E01 - PIERRE
PIEDRA



E04 - EAU
AGUA



E08 - Ceruleo
Cerulean



E12 - GRENADE
GRANADA



E02 - GRIS
GRIS



E05 - VERT
VERDE



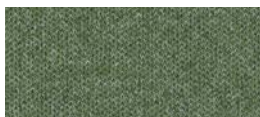
E09 - AZUR
AZUL



E13 - BORDEAUX
BURDEOS



E03 - NOIR
NEGRO



E06 - PELOUSE
VERDE CESPED



E10 - PERVENCHE
PERVINCA



E07 - VERT FONCÉ
VERDE OSCURO



E11 - BLEU
AZUL OSCURO

Cat. F

SEALIFE



100% Recycled Polyester - SEAQUAL
Certified
Poids: 330 gr/m²
Martindale 100.000 cycles
Ignifuge classe 1

100% Poliéster Reciclado - Certificado
SEAQUAL
Peso: 330 gr/m²
Martindale 100.000 ciclos
Ignifugo clase 1



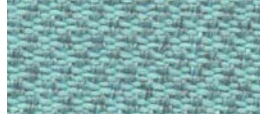
F01 - GRIS
GRIS



**F03 - BOUE
FANGO**



F04 - VERT MOUSSE
VERDE MUSGO



F06 - EAU
AGUA



F10 - OCRE
OCRE



F02 - NOIR
NEGRO



F05 - VERT
VERDE



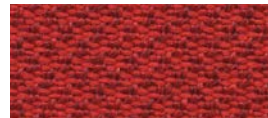
F07 - BLEU CLAIR
CELESTE



F11 - ROUGE BRIQUE
ROJO LADRILLO



F08 - AZUR
AZUL



F12 - GRENADE
GRANADA



F09 - BLEU
AZUL OSCURO

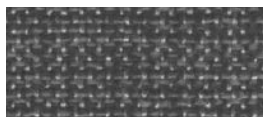
Cat. G

MIXAGE



100% Trevira CS
Poids: 400 gr/m²
Martindale 70.000 cycles
Ignifuge classe 1

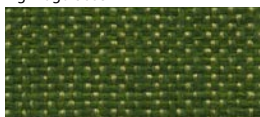
100% Trevira CS
Peso: 400 gr/m²
Martindale 70.000 ciclos
Ignifugo clase 1



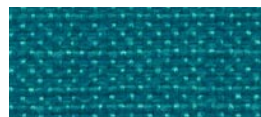
G15 - GRIS
GRIS



G17 - BEIGE
BEIGE



G19 - VERT MOUSSE
VERDE MUSGO



G21 - OUTREMER
ULTRAMARINO



G26 - JAUNE
AMARILLO



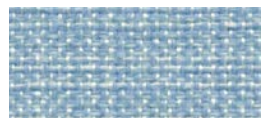
G16 - NOIR
NEGRO



G18 - GRIS TOURTERELLE
TORTOLA



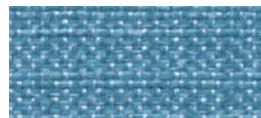
G20 - VERT
VERDE



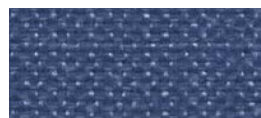
G22 - BLEU CLAIR
CELESTE



G27 - AMBRE
ÁMBAR



G23 - CIEL
CIELO



G24 - BLEU AVIO
AZUL AVIO



G25 - BLEU
AZUL OSCURO

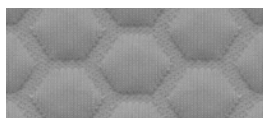
Cat. G

SPAZIO



100% Polyester RECYCLÉ
Poids: 635 gr/m²
Martindale 50.000 cycles
Ignifuge classe 1

100% Poliéster RECICLADO
Peso: 635 gr/m²
Martindale 50.000 ciclos
Ignifugo clase 1



G35 - GRIS
GRIS



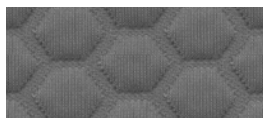
G38 - VERT ACIDE
VERDE ÁCIDO



G41 - PERVENCHE
PERVINCA



G43 - OCRE
OCRE



G36 - ANTHRACITE
ANTRACITA



G39 - VERT
VERDE



G42 - BLEU
AZUL OSCURO



G44 - BORDEAUX
BURDEOS



G37 - NOIR
NEGRO



G40 - PÉTROLE
PETROLIO

Cat. G

POSEIDON

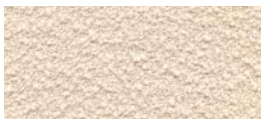


100% Recycled Polyester - SEAQUAL
Certified
Poids: 500 gr/m²
Martindale 100.000 cycles
Ignifuge classe 1

100% Poliéster Reciclado - Certificado
SEAQUAL
Peso: 500 gr/m²
Martindale 100.000 ciclos
Ignifugo clase 1



G51 - ANTHRACITE
ANTRACITA



G53 - IVOIRE
MARFIL



G55 - VERT
VERDE



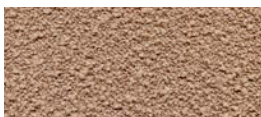
G56 - AZUR
AZUL



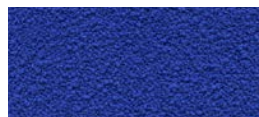
G58 - JAUNE
AMARILLO



G52 - NOIR
NEGRO



G54 - NOISETTE
AVELLANA



G57 - BLEU
AZUL OSCURO

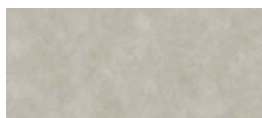
Cat. G

SUPREME



50% PL-Polyester / 35% AC-Acetate
15% PA-Polyamide
Poids: 410 gr/m²
Martindale 200.000 cycles
Ignifuge classe 1

50% PL-Poliéster / 35% AC-Acetato
15% PA-Poliamida
Peso: 410 gr/m²
Martindale 200.000 ciclos
Ignifugo clase 1



G65 - GRIS
GRIS



G68 - BEIGE
BEIGE



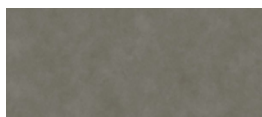
G70 - VERT MOUSSE
VERDE MUSGO



G71 - PLOMB
PLOMO



G73 - OCRE
OCRE



G66 - ANTHRACITE
ANTRACITA



G69 - GRIS TOURTERELLE
TORTOLA



G72 - BLEU AVIO
AZUL AVIO



G74 - HAVANE
HABANA



G67 - NOIR
NEGRO



G75 - ROUILLE
ORIN



G76 - ROUGE
ROJO

FR

La technologie **Aquaclean®** est un traitement qui permet d'éliminer les taches uniquement avec de l'eau. Cela facilite l'entretien des tissus en peu de temps. Grâce aux caractéristiques du tissu, même les poils d'animaux peuvent être rapidement éliminés.

Safe Front® protège contre les acariens et les bactéries.

ES

Aquaclean technology® es un tratamiento que permite eliminar las manchas utilizando únicamente agua. Esto facilita el cuidado de los tejidos en poco tiempo. Gracias a las características del tejido, incluso el pelo de las mascotas se puede eliminar rápidamente.

Safe Front® protege contra ácaros y bacterias.

Cat. I

GRAIN by Gabriel

92% Polyester recyclé post-consummation - 8% Polyester
 80% Polyester recyclé post-consummation - 20% Polyester
 Poids: 439 gr/m²
 Martindale 100.000 cycles

92% Poliéster reciclado posconsumo - 8% Poliéster
 80% Poliéster reciclado posconsumo - 20% Poliéster
 Peso: 439 gr/m²
 Martindale 100.000 ciclo

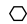


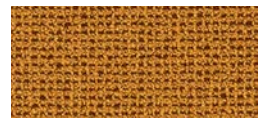
I01 - BLEU AVIO
AZUL AVIO

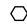


I05 - OR
ORO



I02 - JEANS 
JEANS



I06 - OCRE 
OCRE



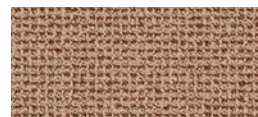
I03 - CESIUM
CESIO



I07 - NUDE
NUDE

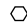


I04 - SOIR 
NOCHE



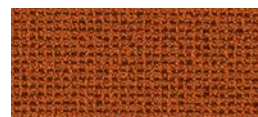
I08 - ROSE POUDRE 
ROSA POLVO

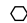


I09 - ROUGE BRIQUE 
ROJO LADRILLO



I10 - ORANGE
NARANJA



I11 - AMBRE 
ÁMBAR

Cat. I

ALLY by Flukso



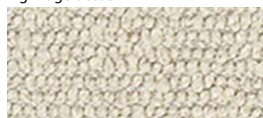
SUR PANNEAUX "SHARE"
SU PANELES "SHARE"

95% PET RECYCLÉ
5% PES
Poids: 420 gr/m²
Martindale 50.000 cycles
Ignifuge classe 1

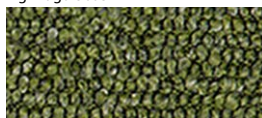
95% PET RECICLADO
5% PSA
Peso: 420 gr/m²
Martindale 50.000 ciclos
Ignifugo clase 1



I45 - GRIS
GRIS



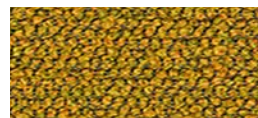
I47 - IVOIRE
MARFIL



I49 - VERT MOUSSE
VERDE MUSGO



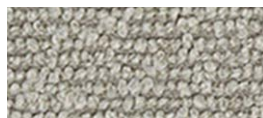
I51 - BLEU AVIO
AZUL AVIO



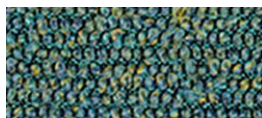
I52 - OCRE
OCRE



I46- ANTHRACITE
ANTRACITA



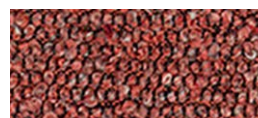
I48 - GRIS TOURTERELLE
TORTOLA



I50 - PÉTROLE
PETROLIO



I53 - ORANGE
NARANJA



I54 - GRENADE
GRANADA